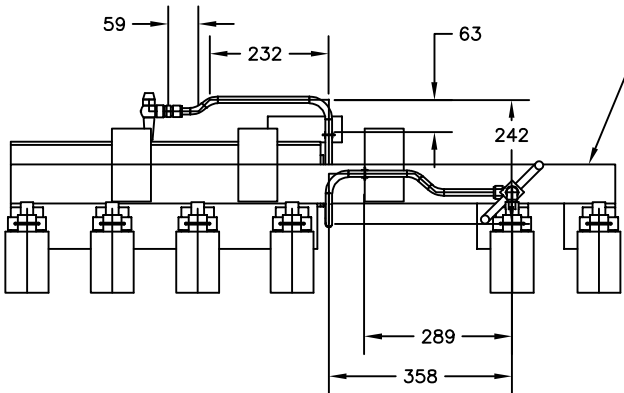
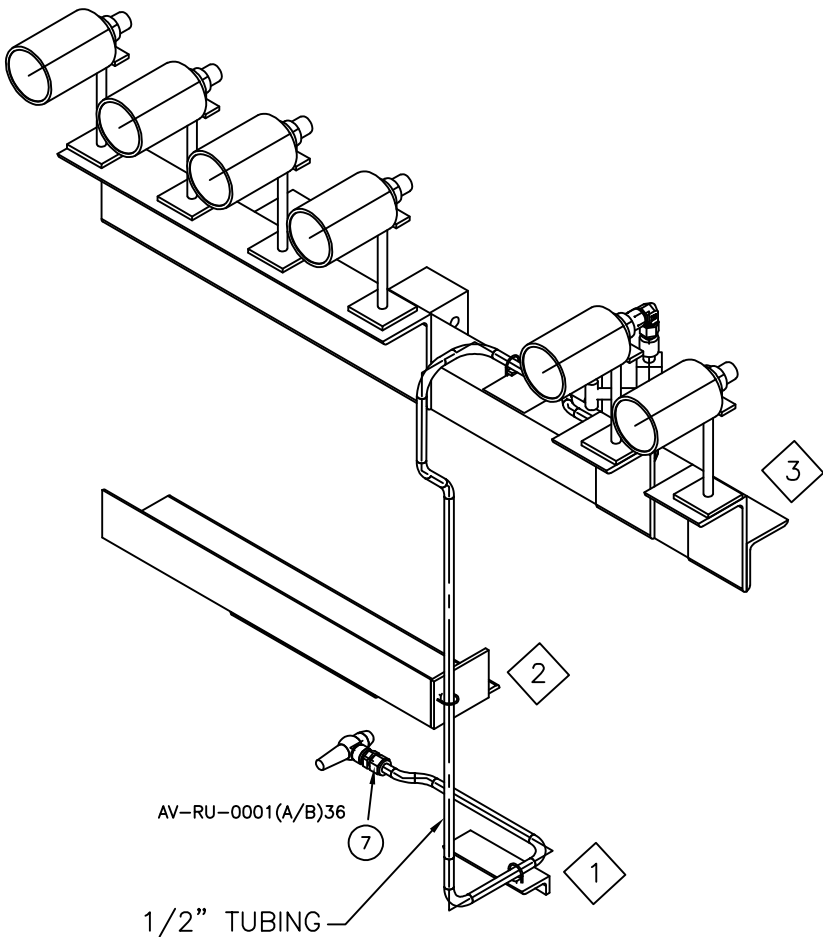


BILL OF MATERIALS			
ID	QTY	SCH/CLASS	DESCRIPTION
1	3500 MM		TUBING, ASTM A269, SEAMLESS – 316SS
2	6		BEND 45 5R, TUBING, ASTM A269, 316SS
3	4		BEND 90 5R, TUBING, ASTM A269, 316SS
4	1		2-Way Manifold 1/2" NPT(M) x 1/2" NPT(F)
5	1		MaleStub1/2NPT(M) x 1/2"Tube
6	6		PRESSURE TRANSMITTER 1/2" NPT(M)
7	1		Male Connector 3/8 NPT x 1/2 T
8	1		ANGLE VALVE 3/8" NPT(M) X 3/8" NPT(F)
9	1		Female Stub 1/2" NPT(F) x 1/2"T
10	2		Female Union Elbow 1/2" T x 1/2"T
11	3		U-clamp

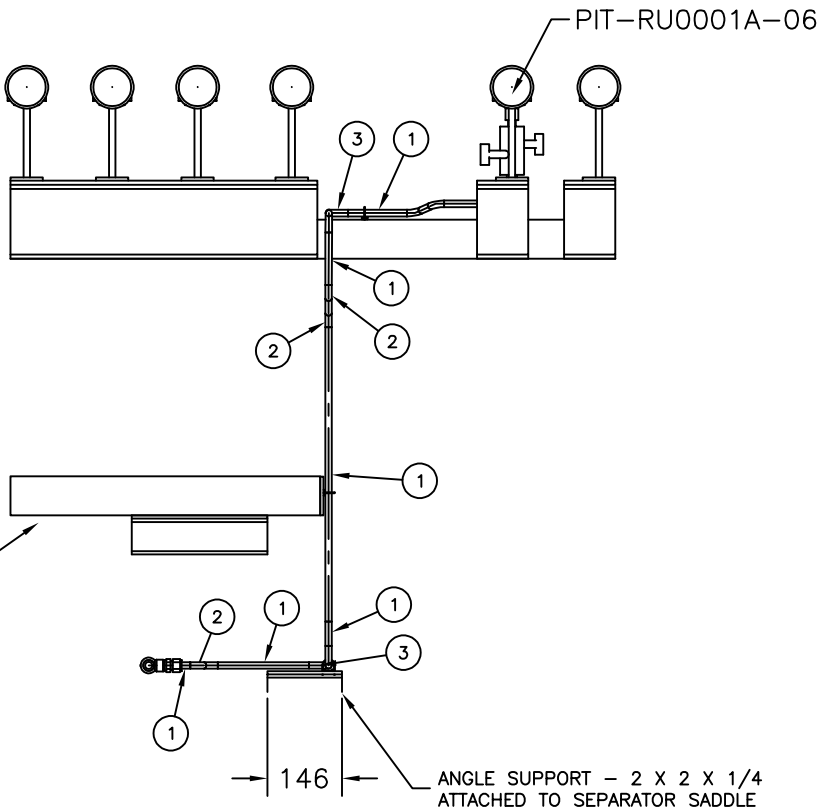
Same as PIT-03 Except tube length



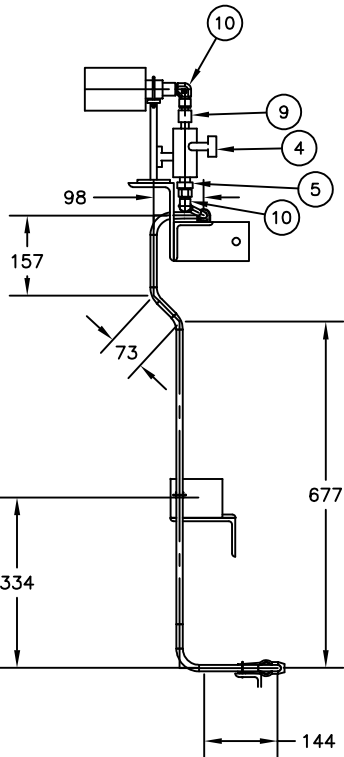
FOR DETAILED DWG OF SUPPORT DRAWING
PLEASE REFER, DWG# MPE007-RU0001A-SPRT



- NOTES:
- ALL TAGS ARE LABELED AS FOLLOWS,
PIT-RU0001(A/B)-01 WHERE 'A' STANDS FOR UNIT 1 &
'B' STANDS FOR UNIT 2.
- FOR EXAMPLE:
- PIT-RU0001A-01 FOR UNIT 1
- PIT-RU0001B-01 FOR UNIT 2



FOR DETAILED DWG OF SUPPORT PLEASE
REFER, DWG# MPE007-JB-SPRT-01



1	F	04.09.24	FOR APPROVAL	AJD	AJD	IES	SES
0	F	16.08.24	FOR APPROVAL	AJD	AJD	IES	SES
REV. STATUS		DATE	PURPOSE OF ISSUE	PREP.	CHKD.	APPD.	AUTH.
CLIENT: SERVICE: LOCATION: UNIT TAG NO.:		ENER TECHNOLOG PROPANE REFRIGERATION PACKAGE IRAQ RU-0001 A/B					
VENDOR LOGO							
Contract No.		P.O. No.	ENER-MME-2024-100-001			SCALE	
DRAWING TITLE: PIT-RU0001(A/B)-06 HOOKUP DRAWING							
DRAWING NO. MPE007- PIT-RU0001(A/B)-06				REV.	SHEET No.		SIZE
				1	1 OF 1		D